



Pembroke Road, Palmers Green, London, N13
Offers In Excess Of £600,000 Freehold

Anthony Webb
ESTATE AGENTS

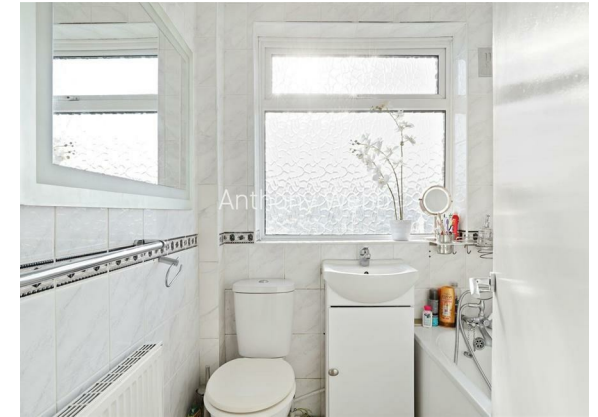
Pembroke Road, Palmers Green, London, N13

A well presented extended 1930s built family home offering four bedrooms and two bath/shower rooms over three floors.

Pembroke Road is a quiet residential turning located within the popular New Park Estate and is within easy reach of local shops and Palmers Green's shops, restaurants, bus routes and mainline station into Moorgate. Firs Farm Wetlands park and popular primary school are also a short walk away.

Porch to front door and hallway • Living room with bay window and feature fireplace to front • Extended open plan living/kitchen space with doors to garden • Modern fitted kitchen • The first floor offers two double bedrooms, one single bedroom and a family bathroom • The converted loft space offers a further double bedroom and en-suite shower room • Double glazing • Gas central heating • Paved garden to rear • Rear studio/storage unit with shower room • Paved hardstanding to front.

- Four bedrooms
- 1930s built house
- Living room
- Extended kitchen/living space
- Two bath/shower rooms
- Double glazing/gas central heating
- Rear studio/storage
- Paved rear garden





**Pembroke Road
Palmers Green
London
N13 5NR**

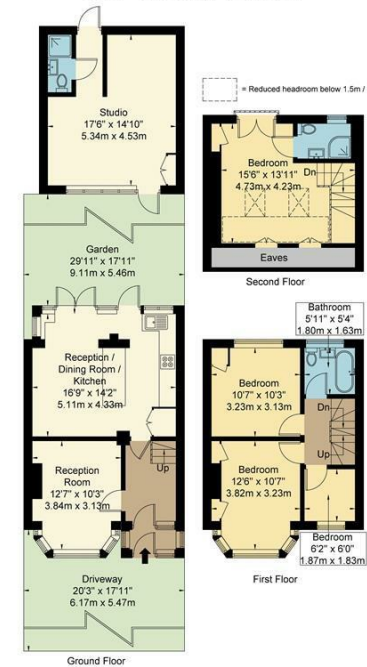
Tenure: Freehold
Gross Internal Area: 1087.00 sq ft



Energy Efficiency Rating		Current	Potential
Very energy efficient - lower running costs			
(92 plus) A			
(81-91) B			
(69-80) C			
(55-68) D			
(39-54) E			
(21-38) F			
(1-20) G			
Not energy efficient - higher running costs			
England & Wales		EU Directive 2002/91/EC	
Environmental Impact (CO ₂) Rating		Current	Potential
Very environmentally friendly - lower CO ₂ emissions			
(92 plus) A			
(81-91) B			
(69-80) C			
(55-68) D			
(39-54) E			
(21-38) F			
(1-20) G			
Not environmentally friendly - higher CO ₂ emissions			
England & Wales		EU Directive 2002/91/EC	

Pembroke Road N13 5NR

Approx Gross Internal Area = 100.7 sq m / 1083 sq ft
Studio = 24.3 sq m / 261 sq ft
Total = 125 sq m / 1344 sq ft



Ref Copyright **BLEU PLAN**
The Floor plan is not to scale and measurements and areas shown are approximate and therefore should be used for illustrative purposes only. The plan has been prepared in accordance with the RICS code of Measuring Practice and whilst we have confidence in the information produced it must not be relied on. If there is any aspect of particular importance, you should carry out or commission your own inspection of the property.
Copyright @ BLEUPLAN

Property particulars as supplied by Anthony Webb Estate Agents are set out as a general outline in accordance with the Property Misdescriptions Act (1991) only for the guidance of intending purchasers of lessees, and do not constitute any part of an offer or contract. Details are given without any responsibility, and any intending purchasers, lessees or third parties should not rely on them as inspection or otherwise as to the correctness of each of them. We have not carried out a structural survey and the services, appliances and specific fittings have not been tested. All photographs, measurements, floor plans and distances referred to are given as a guide only and should not be relied upon for the purchase of carpets or any other fixtures statements or representations of fact, but must satisfy themselves by or of fittings, gardens, roof terraces, balconies and communal gardens as well as tenure and lease details cannot have their accuracy guaranteed for intending purchasers. Lease details, service ground rent (where applicable) are given as a guide only and should be checked and confirmed by your solicitor prior to exchange of contracts. no person in the employment of Anthony Webb has any authority to make any representation or warranty whatever in relation to this property.

348 Green Lanes, Palmers Green, London N13 5TJ
020 8882 7888
palmersgreen@anthonywebb.co.uk
anthonywebb.co.uk

